



Comprehensive Sustainability Tracking and Reporting

Support for Single-Side and Non-Connected Cables

FNT Assistant for AI-Supported Access to Knowledge

Realistic Power Management Schematics

FNT Command 14

Advanced features and functionalities for the modern infrastructure

With FNT Command 14.6, FNT introduces the latest long-term release of its leading software solution for the integrated management of IT, data center, and network

infrastructures. It includes innovative new features and enhancements designed to deliver even greater efficiency and transparency.

HIGHLIGHTS AT A GLANCE

- ✓ **Measurable sustainability:** Integration of EPD data, Scope 3 emissions, and standardized origin information for reliable sustainability analysis and reporting.
- ✓ **Monitoring information in context:** Status information from connected monitoring systems is displayed on the relevant infrastructure objects in FNT Command, increasing transparency.
- ✓ **Flexible cable documentation:** Support for single-sided and non-connected cables, as well as reuse of existing patch cables from inventory.
- ✓ **IP-based telco services:** Direct linking of services to logical ports for precise mapping of the network structure.
- ✓ **Realistic representation of power distribution units:** Vertical alignment of circuit breakers for real-world layouts.
- ✓ **AI-supported access to knowledge:** FNT Assistant provides relevant information about FNT Command through a natural language interface, making product knowledge easier to access.
- ✓ **Cloud readiness:** Support for container-based environments and Kubernetes, enabling standardized cloud operations.
- ✓ **Greater adaptability:** Reset function for customized templates, plus configuration of dependent drop-down menus and cascading data logic without the need for programming.



A Closer Look at FNT Command 14

CORPORATE SUSTAINABILITY REPORTING

FNT Command 14 makes sustainability initiatives across the entire infrastructure measurable and transparent. By integrating Environmental Product Declarations (EPDs) in accordance with the ISO 14025 standard and mapping Scope 3 emissions, it provides a reliable foundation for structured and traceable sustainability management. Standardized information on origin and location makes it easier to compare devices, including by region, and improves reporting. This turns sustainability data into a dependable basis for transparency, compliance, and future-ready infrastructure decisions.



Analysis dashboard for the carbon footprint

INFRASTRUCTURE ELEMENT HEALTH

This release extends infrastructure documentation with information on the condition of individual elements. Health information is displayed directly in the user interface, providing a consolidated view of each element's status based, among other things, on threshold violations, last-seen timestamps, and indicators of documentation completeness. Health data can be integrated from other databases as well as third-party monitoring systems such as Paessler PRTG. This makes it possible to identify critical conditions quickly and create meaningful health reports.

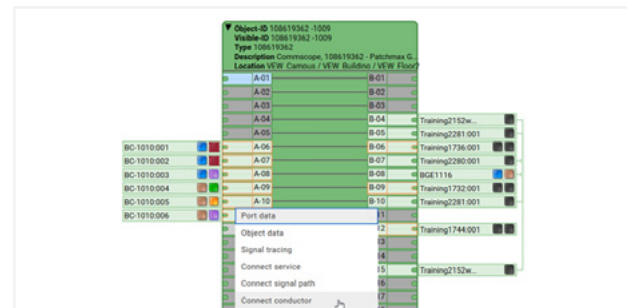
FNT ASSISTANT

FNT Assistant is an AI-based assistant that makes product information accessible through natural language. It searches documentation, training materials, and support resources to provide relevant answers directly within the conversation - in multiple languages and without time-consuming research. This gives users faster access to relevant product knowledge and helps them navigate the software more easily.

CABLE AND OUTSIDE PLANT MANAGEMENT

With Command 14, documentation of cable and outside plant infrastructures becomes even more flexible and aligned with real-world requirements.

- **Patch cables** can now be managed in inventory and reused to support more sustainable resource utilization.
- **Single-side and non-connected cables** can also be included in Object Management, Navigator, Connections, Switch Cabinet, and signal tracing for planning, documentation, and visualization.
- **All cable actions** are fully tracked in the history, ensuring maximum transparency.
- **Visualization** has been improved with customizable icons and wire color displays.
- **Improved signal tracing** also displays submodules for better traceability.
- **Couplers** can be assigned to nodes such as manholes.
- **Fiber and splice management** offers even greater flexibility for handling uncut fibers in junction boxes and includes the option to export standardized splice plans.



Single-side connected cable in Connections

POWER MANAGEMENT

Power distribution is now even easier to understand. Circuit breakers with vertical orientation can now be displayed realistically. Optimized terminology ensures compliance with international standards and supports smoother global rollouts.

TELCO

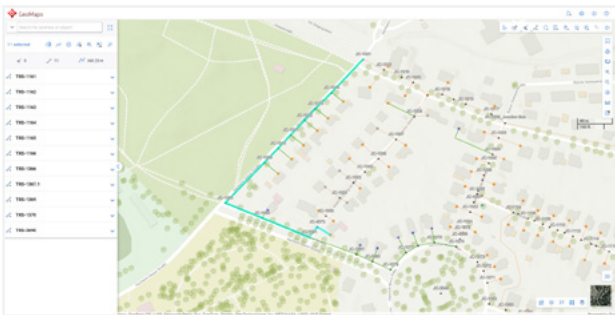
Telco operations benefit from advanced planning tools. Move bearers and reroute start/end points directly in Planning mode. IP-based services can be linked directly to logical ports for more accurate representation. Enhanced search filters make it easier to locate devices

with matching service types during configurations. The enhanced Connected Service Report can be executed directly from a device or other related entities such as zones, cables, services, and ports. In addition, the Excel-based import function enables easy administration of service type hierarchies – ideal for fast and efficient configuration of even complex network hierarchies.

TRAY MANAGEMENT & FNT GEOMAPS

Enhanced Tray Management functions make real-world planning easier. New rules simplify duct and tray section splits, improving the consistency of documented data. Cable lengths are calculated automatically based on tray routes, even without full documentation.

In addition, FNT GeoMaps can now estimate cable lengths based on georeferenced routes. Multi-ducts can be opened and visualized in their real-world context. Duct-related attributes can also be displayed directly in GeoMaps. Features such as bookmarks and adjustable sidebars improve usability. A new Health Check helps simplify troubleshooting by checking GeoMaps Server, ArcGIS components, and Command for connectivity, resource usage, licensing, and version compatibility. GeoMaps now also supports offline operation. For added security, two-factor authentication via LDAP-based identity management is now included.



Selected route in FNT GeoMaps

FURTHER ENHANCEMENTS

- ✓ **Improved adaptability:** Customized templates can be reset to their original state, and relation entities can be exported and imported, enabling seamless transfer of configurations between Command systems. In addition, dependent drop-down menus and cascading data logic can now be configured without any programming effort.
- ✓ **Expanded integration with FNT ProcessCenter:** Workflows can be started directly from Command objects. Requests can be linked to Command objects, making relationships between requests and objects easier to track.
- ✓ **Enhanced cloud readiness:** Operation of FNT Command in Kubernetes clusters is now supported.
- ✓ **Optimized warehouse management:** Hierarchical warehouse structures can be defined in Warehouse Management, and devices can be assigned more efficiently. Inventory thresholds can be managed both globally and within substructures, enabling timely reordering and minimizing downtime.
- ✓ **ReconEngine enhancements:** It now supports complex outside plant management scenarios, such as ducts-in-multiducts. Features such as job-level logging, synchronization of logical port subdivisions, and configurable matching IDs improve traceability. New capabilities also include an import function for IP network infrastructures, custom configurations for multi-source scenarios, and enhanced import functions for outside plant infrastructures even without complete route information.
- ✓ **Business Gateway (BGW):** It can now be reinitialized without a restart. API enhancements include the ability to update cable types in bulk, reconnect uncut fibers, and perform more complex API queries. The new BGW for Signal Management enables audit-proof cable rerouting for greater speed and security.

Upgrade now and unlock the full value of the new features in Command 14.6!